



York's next Local Transport Plan What should be included?

Professor Tony May

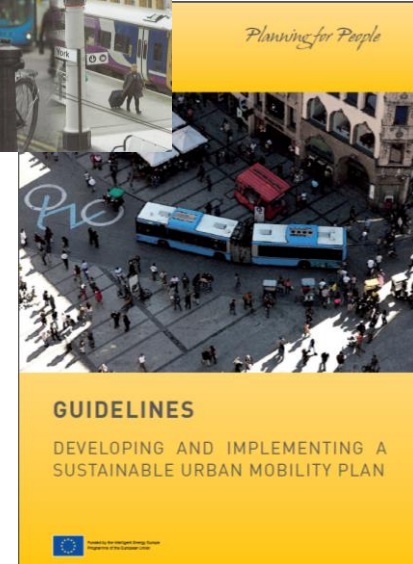
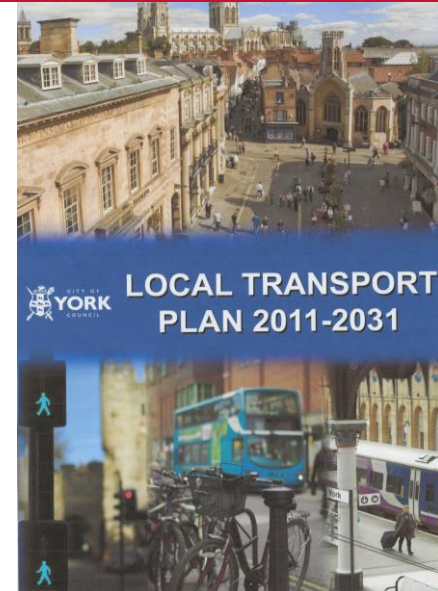
Chair, York Civic Trust Transport Advisory Group

Local Transport Plans



UNIVERSITY OF LEEDS

- York's LTP3 published in 2011
 - With detailed plans to 2016
- No UK guidance since 2009
- But EU guidance on Sustainable Urban Mobility Plans published in 2014
 - And being updated currently
- All guidance offers the same advice
 - First specify your vision and objectives
 - Then develop a strategy
 - And only then think about possible policy measures and packages



Key recommendations on measure selection



UNIVERSITY OF LEEDS

Supporting guidance on measure selection published in 2016 recommends:

1. Specify your **Vision** and **Objectives**

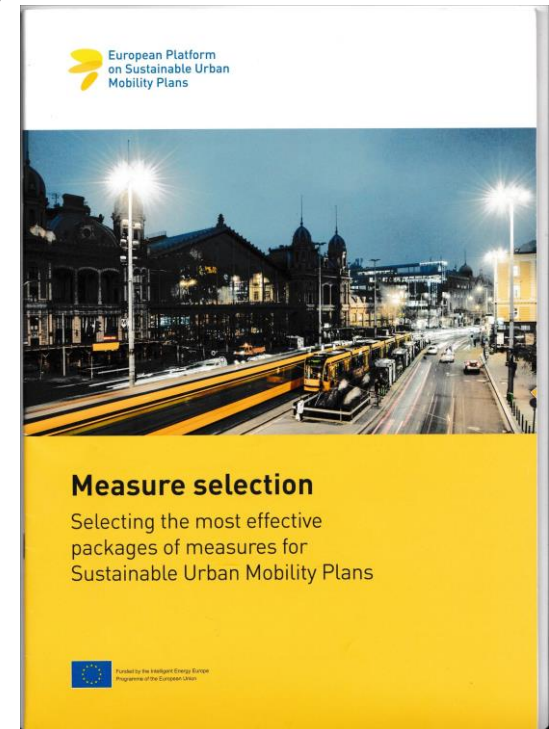
2. Decide on your **Strategy**

3. Assess the full range of **Measures**

4. Consider **Packaging** your **Measures**

5. Understand your **Constraints**

And involve the **Public** and **Stakeholders** throughout the process



Possible objectives

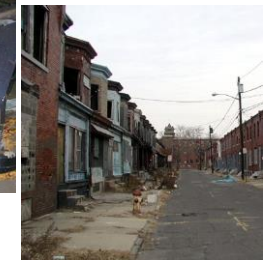


UNIVERSITY OF LEEDS

Objectives can be based on the city's Vision or a review of the problems it faces

Typical objectives include:

- **Greater efficiency**
- **Liveable streets**
- **Protected environment**
- **Increased equity**
- **Improved safety**
- **Promotion of public health**
- **Support for economic growth**



A **Strategy** is a broad direction of policy; e.g.:

- Reducing the need to travel
- Reducing car use
- Improving public transport
- Improving road network performance
- Improving walking and cycling
- Improving freight operations



An overall **Strategy** can include **all** the above

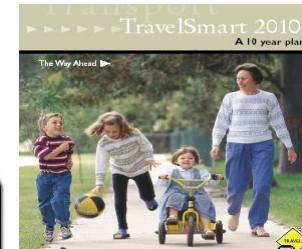
The range of policy measures



UNIVERSITY OF LEEDS

Many new types of **Policy Measure**

- Demand-responsive micro-transit
- Car and bicycle sharing
- Ridesourcing
- Low emission zones
- Mobile real time guidance
- Personalised travel advice
- Road pricing
- Contactless fare systems
- Mobility as a Service



Pay as you Go	White Everyday	White Suburban
10	10	10
Pay as you Go	Unlimited	Unlimited
Pay as you Go	Pay per mile	Unlimited
Pay as you Go	Max 800/day	Unlimited
Coming soon!	Coming soon!	Coming soon!
Now	April 28th	April 28th
Read more	Read more	Read more

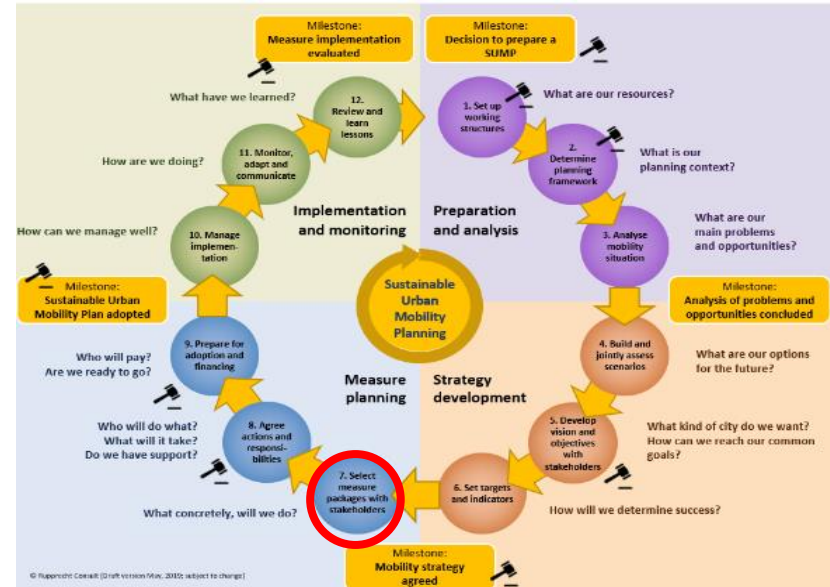
Perhaps twice as many **Policy Measures** as 30 years ago

Selecting suitable policy measures



UNIVERSITY OF LEEDS

- Any policy measure will contribute more to some objectives than others
- And most will be more cost-effective as part of a package supporting a strategy
- Deciding what to do too early in the process can result in better options being missed
- So measure selection comes midway through the SUMP/LTP process

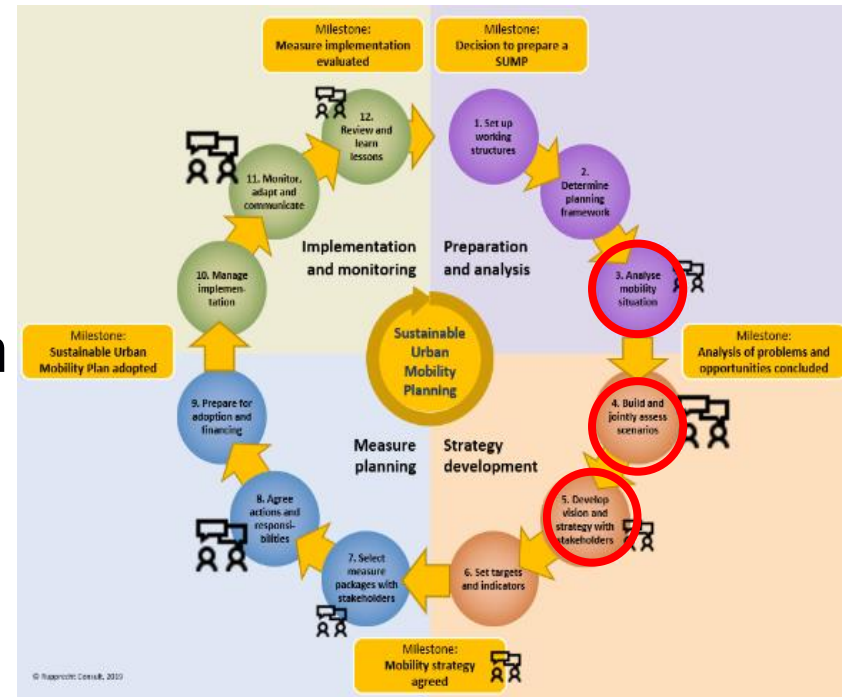


Involving the public



UNIVERSITY OF LEEDS

- We are aiming to involve the public throughout the process
- Our questionnaires ask about
 - Problems
 - Objectives
 - Possible measures
- Our Citizens' Transport Forum will review, with CYC:
 - Vision and objectives (1/20)
 - Strategy (3/20?)
 - Policy measures (4/20?)
 - Implementation (6/20?)



Suggested measures to date



UNIVERSITY OF LEEDS

- Separate cycle lanes
- Orbital bus routes
- Free bus service in the centre
- Buses from villages to P&R
- Smart travel cards
- Discounted fares for 16-25s
- Delivery hub with electric onward delivery
- Major developments designed to discourage car use
- Workplace parking levy
- Congestion charge
- Car parks for blue badge only
- Enforcement and fines to counter pavement parking
- Streets where “cars are guests”
- More charging points
- Promote e-bikes
- Promote car clubs
- Employers to encourage car sharing



Strategy element

- Reduce the need to travel
- Reduce car use
- Improve public transport
- Improve use of road space
- Improve walking and cycling
- Improve freight

Our approach

- YEF; YCT Sustainable Communities sub-group
- None as yet
- YBF; YEF; YCT sub-group
- YCT City Centre sub-group and work on junction design
- YWCF and YCC with support from YCT, YEF
- YCT Freight sub-group



- We need to ensure that current developments
 - Are consistent with the emerging strategy
 - Do not rule out subsequent enhancements
- For example
 - York Central
 - Castle Gateway
 - York Station
 - New residential areas
 - The outer ring road
 - The “mass transit” study
 - Proposed junction improvements

Further information



UNIVERSITY OF LEEDS

- Please complete our surveys
 - <https://surveys.qaresearch.co.uk/YorkTransportResidents.asp>
 - <https://surveys.qaresearch.co.uk/YorkTransportCommuters.asp>
- Do look at YCT's latest statement on Principles of Transport Policy for the City of York
 - <https://yorkcivictrust.co.uk/home/transport/transport-policy-matters>

Thank you!